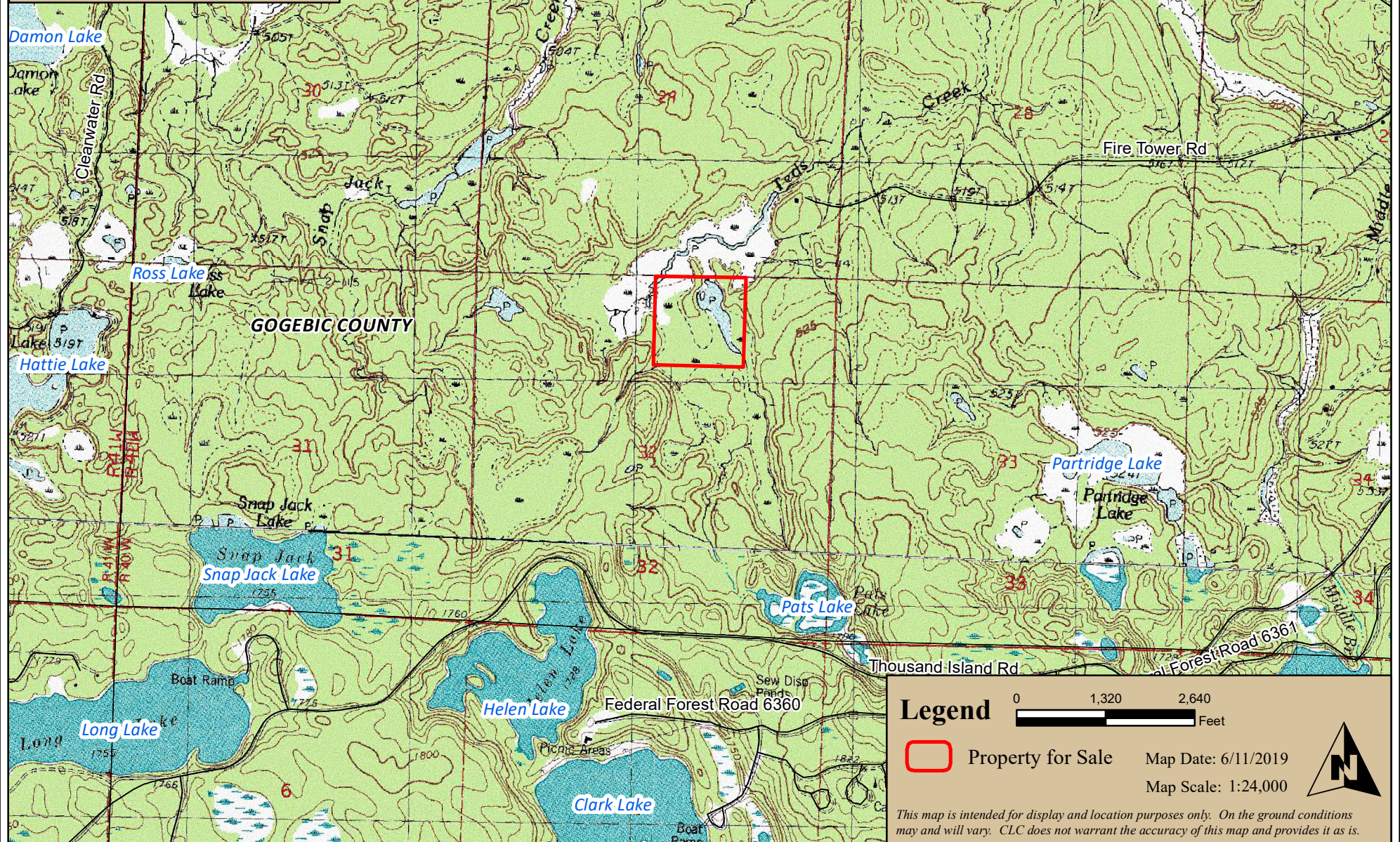


Fire Tower  
Part of Section 32,  
T45N-R40W,  
Gogebic County, MI



**CLC LANDS**  
& PRIVATE LAKES, INC.



**Legend**



Property for Sale

Map Date: 6/11/2019

Map Scale: 1:24,000



This map is intended for display and location purposes only. On the ground conditions may and will vary. CLC does not warrant the accuracy of this map and provides it as is.