

Douglas County 45 Acres

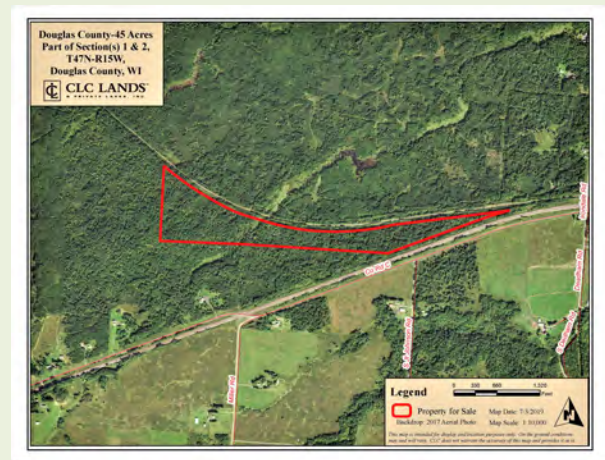
\$35,000

Acreage:	45 Acres	Nearest Cities:	Superior
Price/Acre:	\$778/Acre	School District:	Superior
Waterfront:	No	Access:	Year-Round
Frontage:	N/A	Utilities:	None
County:	Douglas	Commercial Forest:	No
Township:	Superior	MLS ID:	1527041



8a [Ug7a bml'45 '5 Wg

This 45-acre wooded recreational property is located five miles south of Oliver. The property does not have legal road access; however, the Saunders State Trail acts as the northern boundary. The property's eastern boundary is approximately one-quarter of a mile from County Road W, which makes it easy to access via the trail. The trail allows several uses which include All Terrain Vehicle riding, snowmobiling, horseback riding, bicycling, and hiking. The property is mostly upland with an aspen forest cover. An additional 150 acres of nearby recreational land is also available for purchase!





CLC LANDS™
& PRIVATE LAKES, INC.

ENJOY SEARCHING FOR YOUR
DESTINATION PROPERTY AT
www.clclands.com

The Compass Land Consultants' CLC Lands & Private Lakes, Inc. network provides access to land and water real estate in the heart of the Upper Midwest. Our website www.clclands.com lets you search property listings by destination – such as Northern Wisconsin, Michigan's Western Upper Peninsula, Michigan's Eastern Upper Peninsula, whole private lake, shoreline, or acreage estate – just to name a few! We have a comprehensive understanding of land, and we know how to appraise and value it. Compass Land Consultants is a unique and distinctive team of real estate brokers, foresters, land management professionals, and appraisal experts offering a wide selection of properties throughout the fabulous upper Midwest. With numerous office locations in Wisconsin and Michigan, our team of experts specialize in meeting all of your land needs! We Value Nature.



COMPASS LAND CONSULTANTS CLC LANDS & PRIVATE LAKES, INC.

9559 BOLGER LAKE ROAD
MINOCQUA, WI 54548

P: (715) 358-0600
F: (715) 358-0400
www.clclands.com



SIMILAR PROPERTIES



Douglas County - 150 Acres Nearby!



Near Swamp Lake Road - 40 Acres



Swamp Lake Road #1 - 40 Acres



Swamp Lake Road #3 - 17 Acres