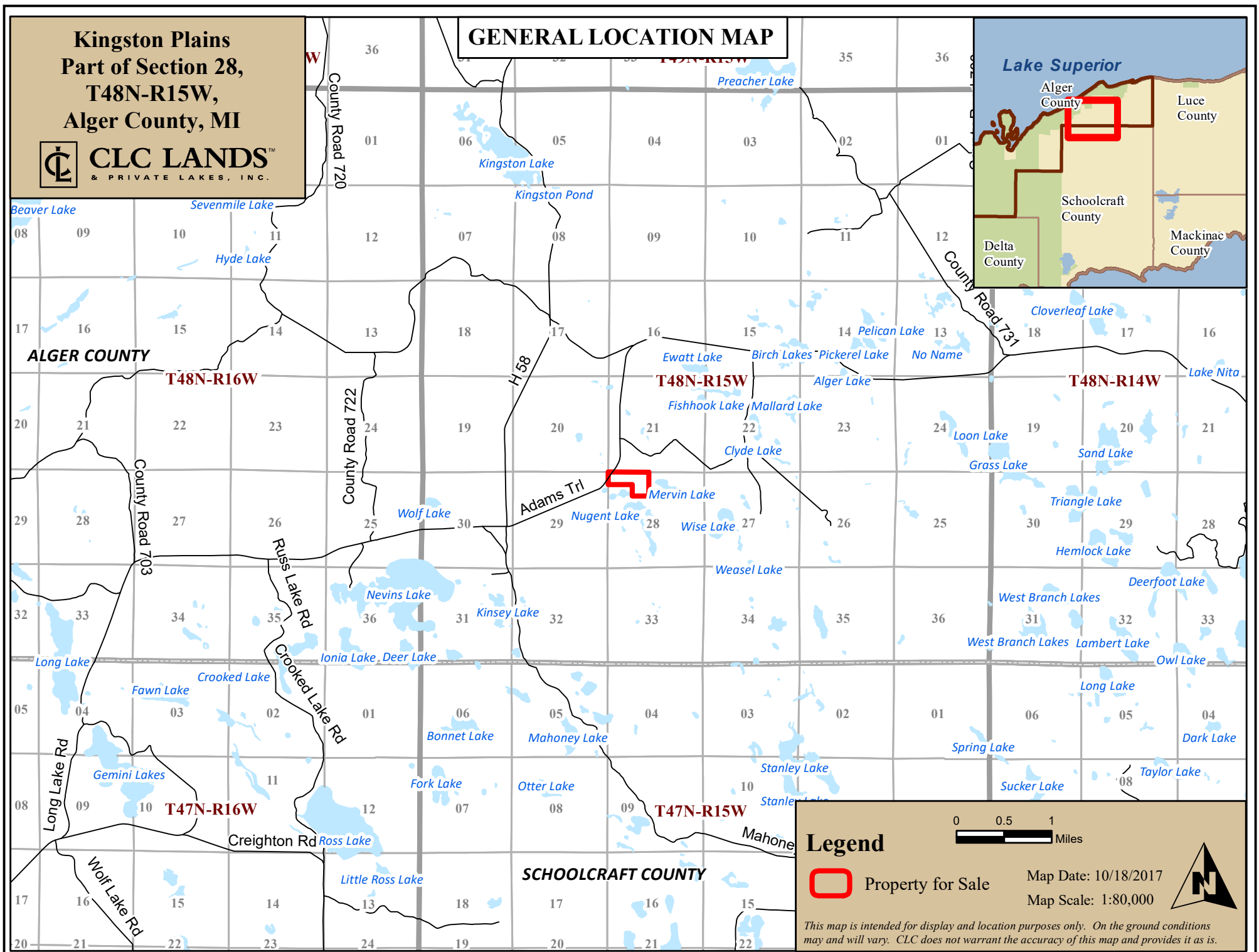
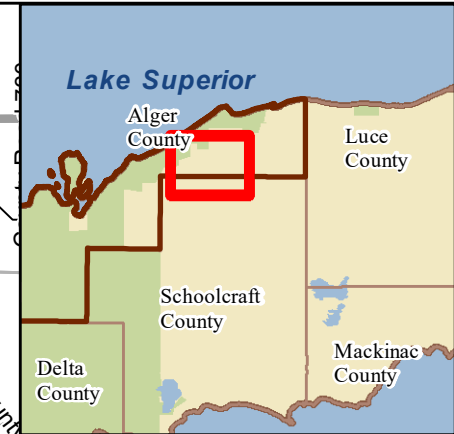


Kingston Plains
Part of Section 28,
T48N-R15W,
Alger County, MI



GENERAL LOCATION MAP



Legend

- Property for Sale

Map Date: 10/18/2017
Map Scale: 1:80,000

This map is intended for display and location purposes only. On the ground conditions may and will vary. CLC does not warrant the accuracy of this map and provides it as is.