

Sand River Area

\$177,100

Acreage: 161 Acres
Price/Acre: \$1,100/Acre
Waterfront: No
Frontage: N/A
County: Alger
Township: Onota

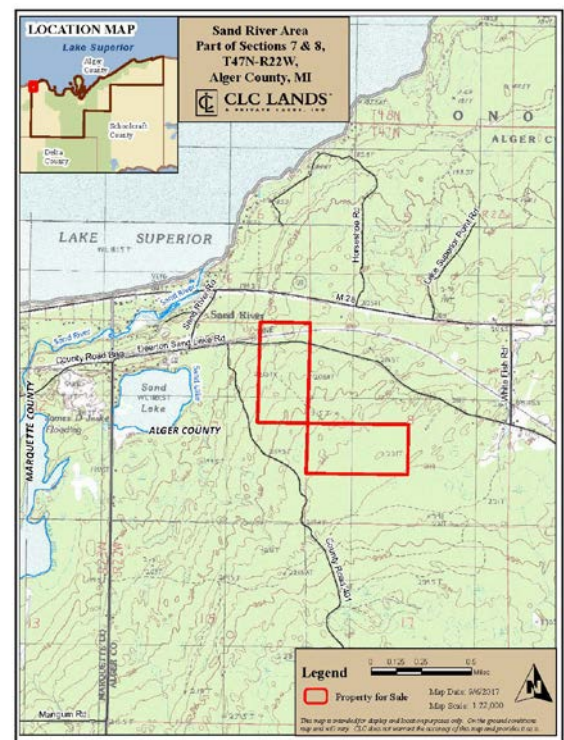
Nearest City: Marquette
School District: AuTrain-Onota, Munising
Access: Year round
Utilities: Phone, Internet
Commercial Forest: Yes
Property ID: A472207



Eighteen miles from downtown Marquette, Michigan and a short hop off State Highway M28 onto Sand River Road and then a left onto the Deerton Sand Lake Road will take you straight across the northern portion of this 161-acre, hemlock/red maple-dominated property made for four-season recreation.

The former DSS&A Railway grade runs across this Sand River area parcel in western Alger County. Hikers can pick up the North Country Trail less than one mile down this repurposed railroad grade. In the winter, it is labeled Marquette/Alger County Snowmobile trail #417, allowing for easy on/easy off access for “sledders.” The UP 200 Sled Dog Race is routed through here every February. Swimmers and beach lovers are within 1.5 miles to a sandy Lake Superior public beach access. ATV enthusiasts, mountain bikers, hunters, or anyone who wants to own a lot of land and live twenty minutes from the largest town in the Upper Peninsula – will like this location.

<https://goo.gl/maps/ivhhwoK3wRn>





The Compass Land Consultants' CLC Lands network provides access to unadulterated land and water real estate in the heart of the Upper Midwest. Our website www.clclands.com lets you search property listings by destination – such as a whole private lake, shoreline, acreage estate – or by lifestyle preferences like sailing, fishing, vacation, retirement, and many others.

We have a comprehensive understanding of land and we know how to appraise and value it. Compass Land Consultants is a unique and distinctive network of real estate brokers, foresters, land management and appraisal experts offering a wide selection of properties throughout the fabulous upper Midwest.



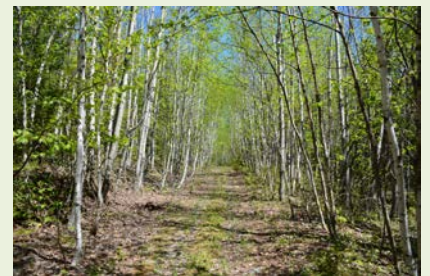
SIMILAR PROPERTIES



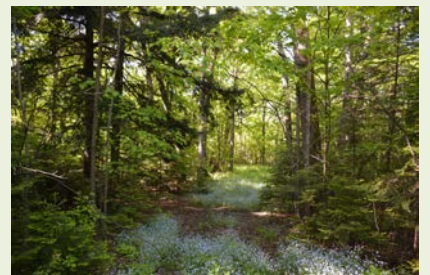
Pull-Up Hill



Kingston Plains



Marquette County CL



28 Timber

COMPASS LAND CONSULTANTS CLC LANDS & PRIVATE LAKES, INC.

E3310 STATE HIGHWAY M28
AUTRAIN, MI 49806

P: (906) 892-8665

F: (906) 892-8691

www.clclands.com

CLC_Lands@compasslandconsultants.com