

Kingston Plains

\$49,000

Acreage:	49 Acres	Nearest Cities:	Grand Marais
Price/Acre:	\$1,000/Acre	School District:	Burt Township
Waterfront:	No	Access:	Year-round
Frontage:	N/A	Utilities:	Yes
County:	Alger	Commercial Forest:	Yes
Township:	Burt	Property ID:	A481528R

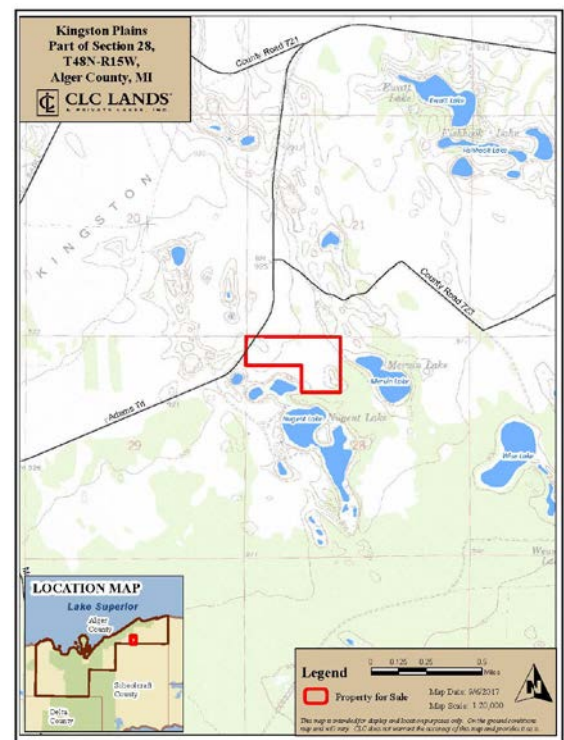


This is a 49-acre property with year-round access and utilities adjacent to Nugent Lake. The parcel does not come with lake access, but there is a view of the water. This is flat sand plains country possessing a unique appearance resulting from slash burned in fires common during the 1800s when the area was clear-cut. At that time, the fire burned so hot that it sterilized the soil.

Today, the land contains open-grown white pine that is wider than it is tall. There are scores of old white pine stumps strewn throughout the growth. Blueberries are plentiful.

In the winter, Kingston Plains offers prime snowmobiling opportunities in an area receiving an average of 233 inches of snow per year.

<https://goo.gl/maps/hDh1RbRe9SM2>





The Compass Land Consultants' CLC Lands network provides access to unadulterated land and water real estate in the heart of the Upper Midwest. Our website www.clclands.com lets you search property listings by destination – such as a whole private lake, shoreline, acreage estate – or by lifestyle preferences like sailing, fishing, vacation, retirement, and many others.

We have a comprehensive understanding of land and we know how to appraise and value it. Compass Land Consultants is a unique and distinctive network of real estate brokers, foresters, land management and appraisal experts offering a wide selection of properties throughout the fabulous upper Midwest.



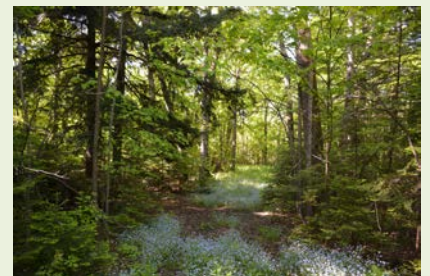
SIMILAR PROPERTIES



Pull-Up Hill



Marquette County CL



28 Timber



Sand River Area

COMPASS LAND CONSULTANTS CLC LANDS & PRIVATE LAKES, INC.

E3310 STATE HIGHWAY M28
AUTRAIN, MI 49806

P: (906) 892-8665

F: (906) 892-8691

www.clclands.com

CLC_Lands@compasslandconsultants.com